





E

F

C

B

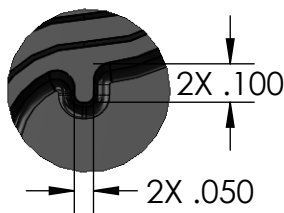
UNLESS OTHERWISE SPECIFIED: DIMENSIONS ARE IN: INCHES[mm] TOLERANCES: ANGULAR: $\pm 2^\circ$ TWO PLACE DECIMAL: $\pm 0.30$ THREE PLACE DECIMAL: $\pm 0.15$ PRINTED GRAPHICS: $\pm 0.10$ PROPRIETARY AND CONFIDENTIAL. THE INFORMATION CONTAINED IN THIS DRAWING IS THE SOLE PROPERTY OF POLYCASE. ANY REPRODUCTION IN PART OR AS A WHOLE WITHOUT THE WRITTEN PERMISSION OF POLYCASE IS PROHIBITED. CAD FILE: HD-44FMMT	<b>PART NO.</b> <b>HD-44FMMT</b> <b>MATERIAL</b>	 1305 CHESTER DR. FARMWAY AVON, OHIO 44011-1085 U.S.A. PH: 1-800-246-1233, 419-344-0444 FAX: 419-344-0808
19	<b>FLAME RATING</b> <b>UL94V-0</b>	<b>SIZE</b> <div style="display: flex; align-items: center; justify-content: center;"> <div style="font-size: 4em; margin-right: 10px;">C</div> <div style="text-align: center;"> <b>HD ASSEMBLY</b>  <b>REV.</b>  <span style="font-size: 2em;">-01</span> </div> </div> <div style="display: flex; align-items: center; justify-content: space-between; margin-top: 10px;"> <div> <b>SCALE: 1:1</b>   </div> <div> <b>SHEET 1 OF 1</b> </div> </div>

**poly**case  
1305 CHESTER IND. PARKWAY AVON, OHIO 44011-1083 U.S.A.

.01

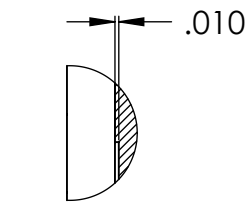
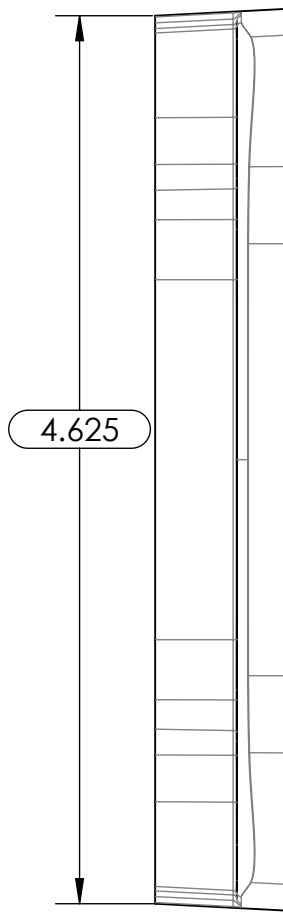
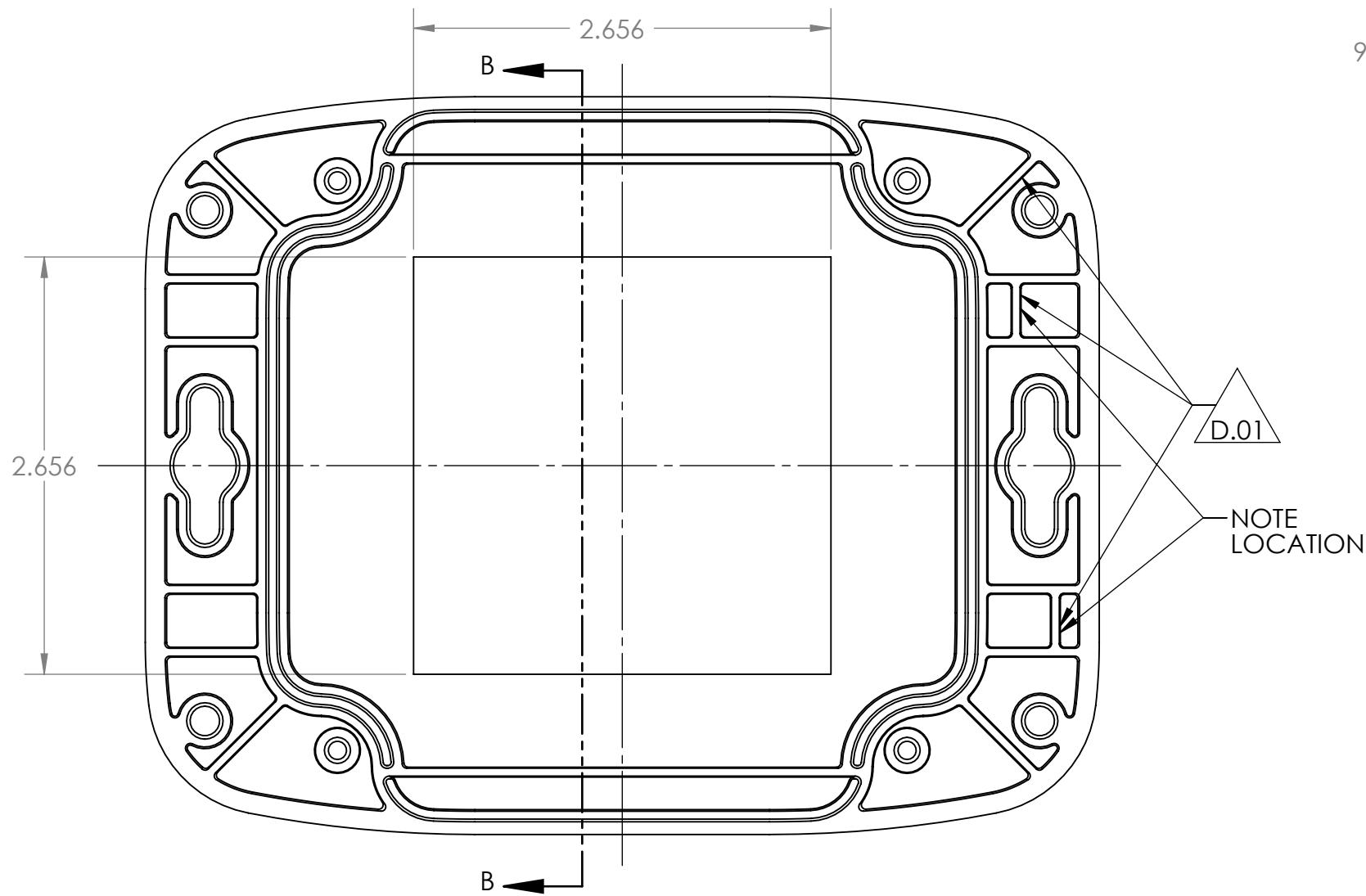
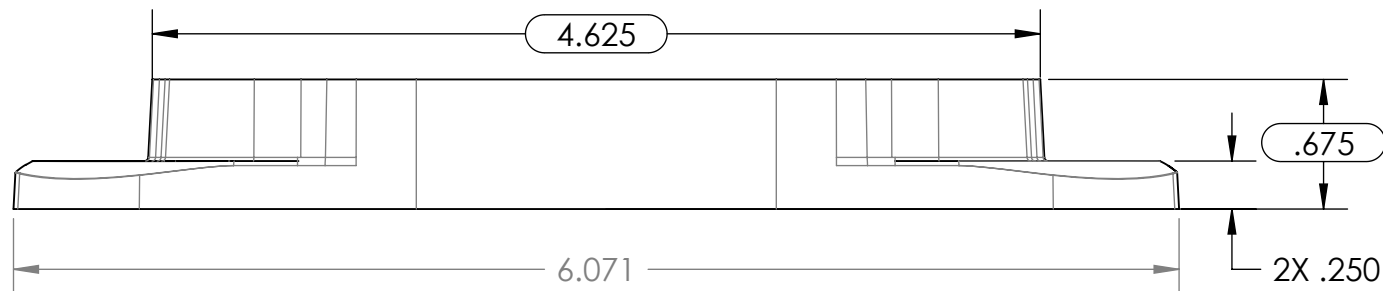
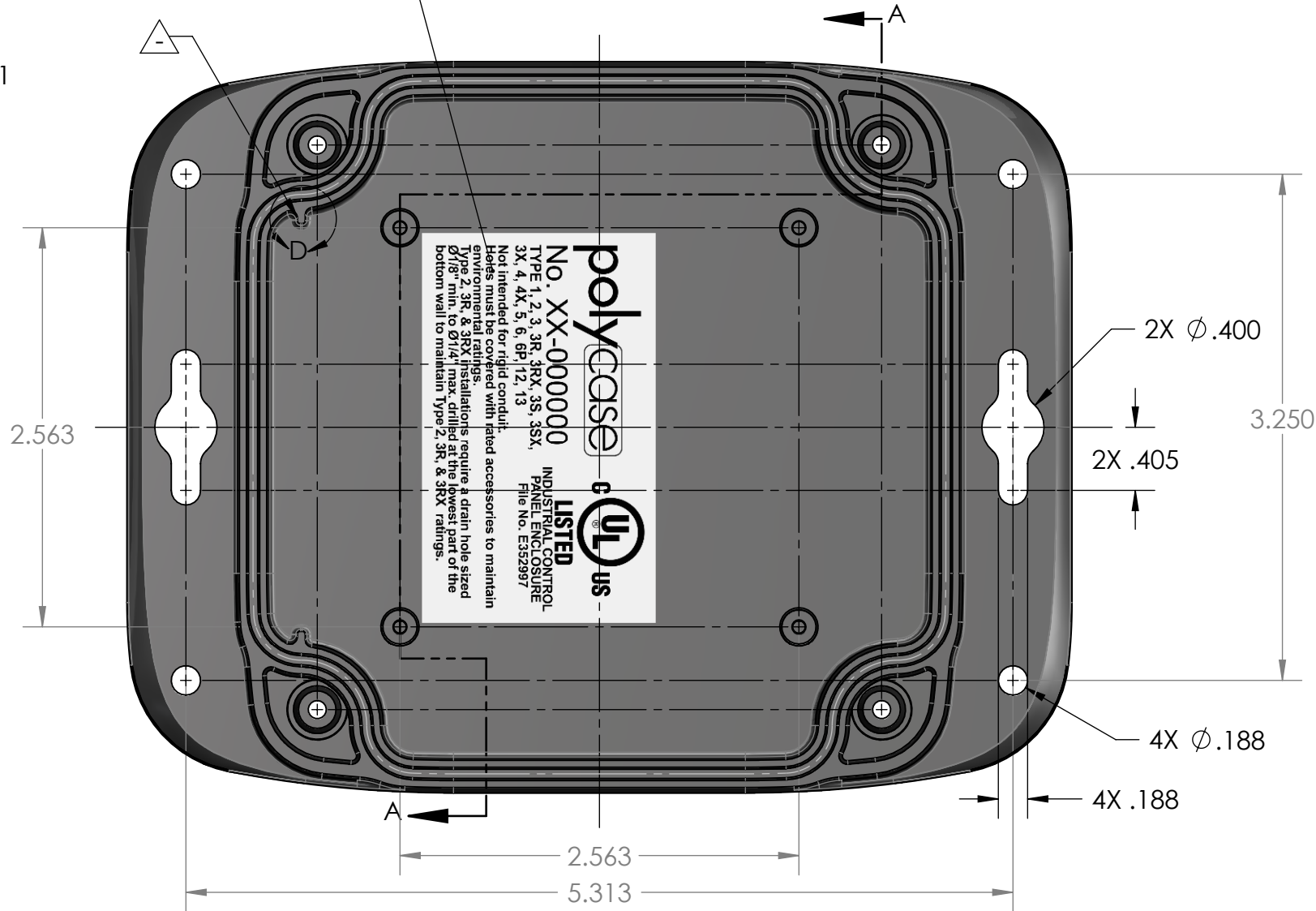
SHEET 1 OF 1



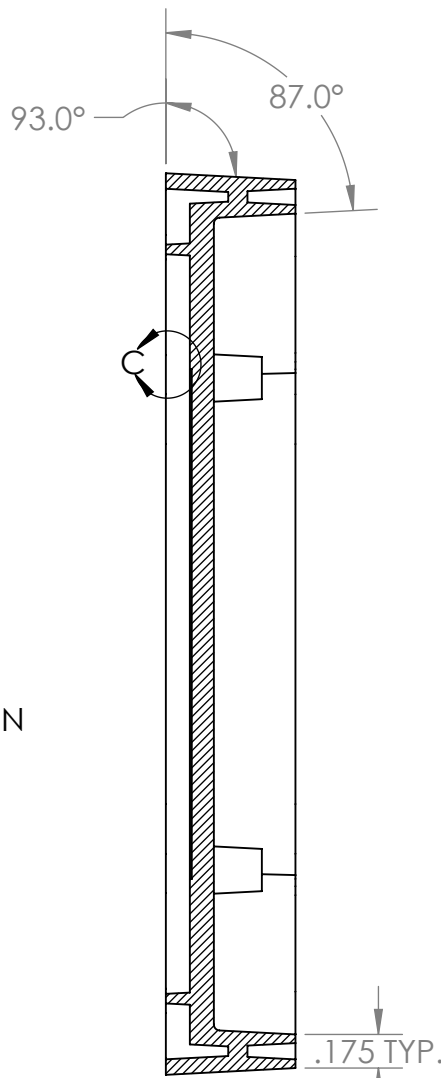


DETAIL D  
SCALE 2 : 1

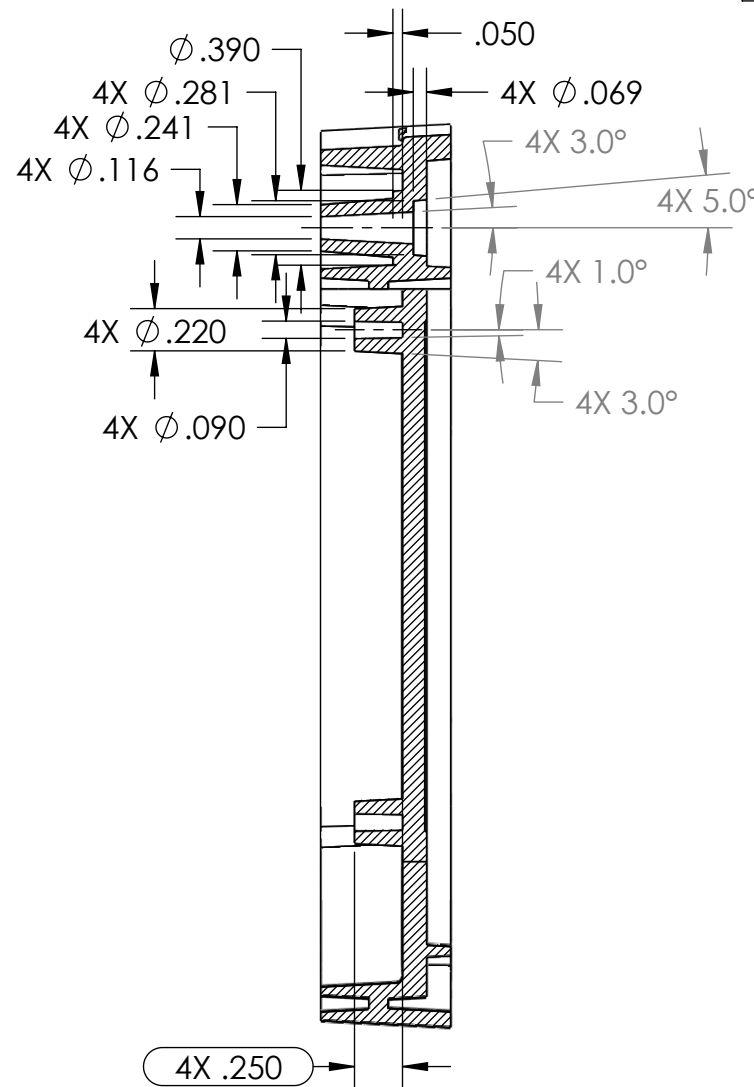
LABEL-103, APPROX. POSITION



DETAIL C  
SCALE 2 : 1



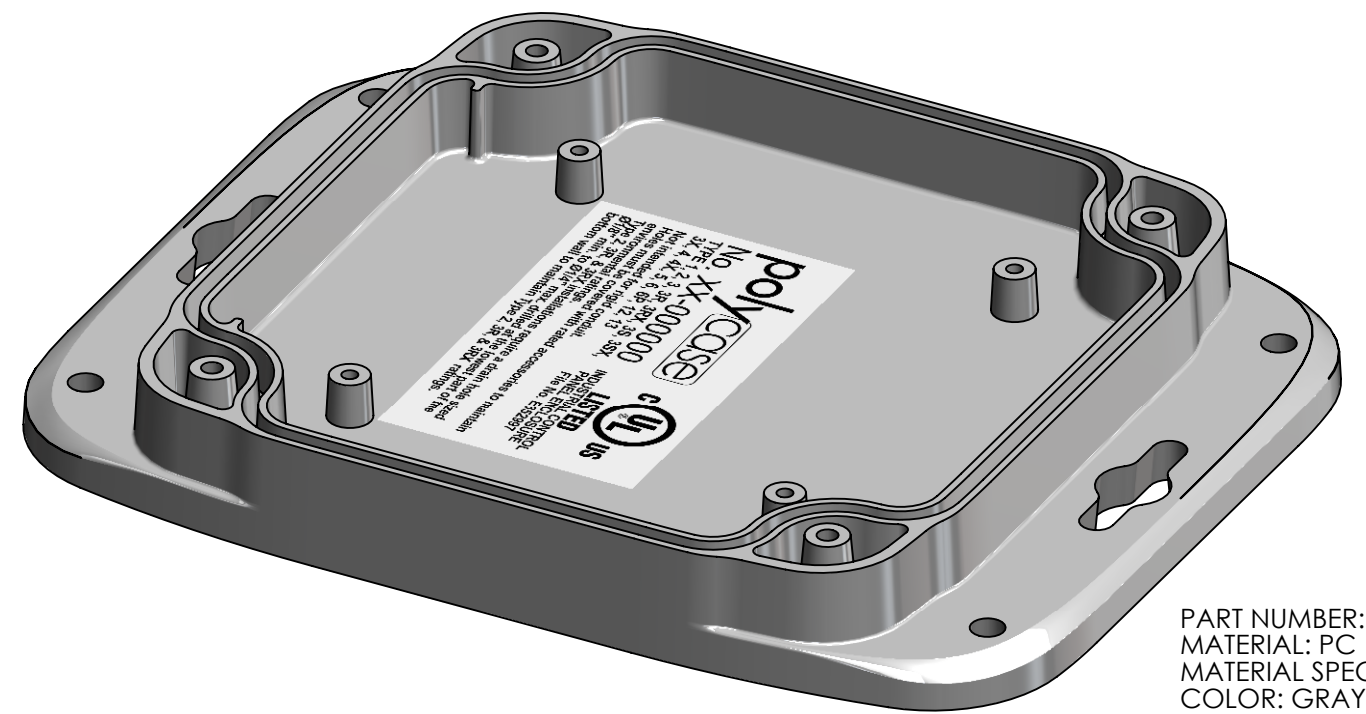
SECTION B-B



SECTION A-A



PART NUMBER: HD-44BFMB  
MATERIAL: PC  
MATERIAL SPEC: /PC/XXX/BK  
COLOR: BLACK  
FLAME RATING: 5VA



PART NUMBER: HD-44BFMB\*15  
MATERIAL: PC  
MATERIAL SPEC: /PC/XXX/GY  
COLOR: GRAY (RAL 7035)  
FLAME RATING: 5VA

DIMENSION RANGE	TOLERANCE CHART													
	0	.039	.118	.236	.394	.591	.866	1.181	1.575	2.087	2.756	3.543	4.724	
TOOL DEPENDENT	±.007	±.007	±.008	±.008	±.009	±.010	±.011	±.012	±.013	±.015	±.017	±.020	±.024	
NON-TOOL DEPENDENT	±.003	±.004	±.004	±.004	±.005	±.006	±.007	±.008	±.009	±.011	±.013	±.016	±.020	

- NOTES:
1. (INSPECTION DIMENSION)
  2. EJECTOR PINS TO BE FLUSH ±.010
  3. FLASH .005 MAX
  4. GATE MUST BE FLUSH ±.010

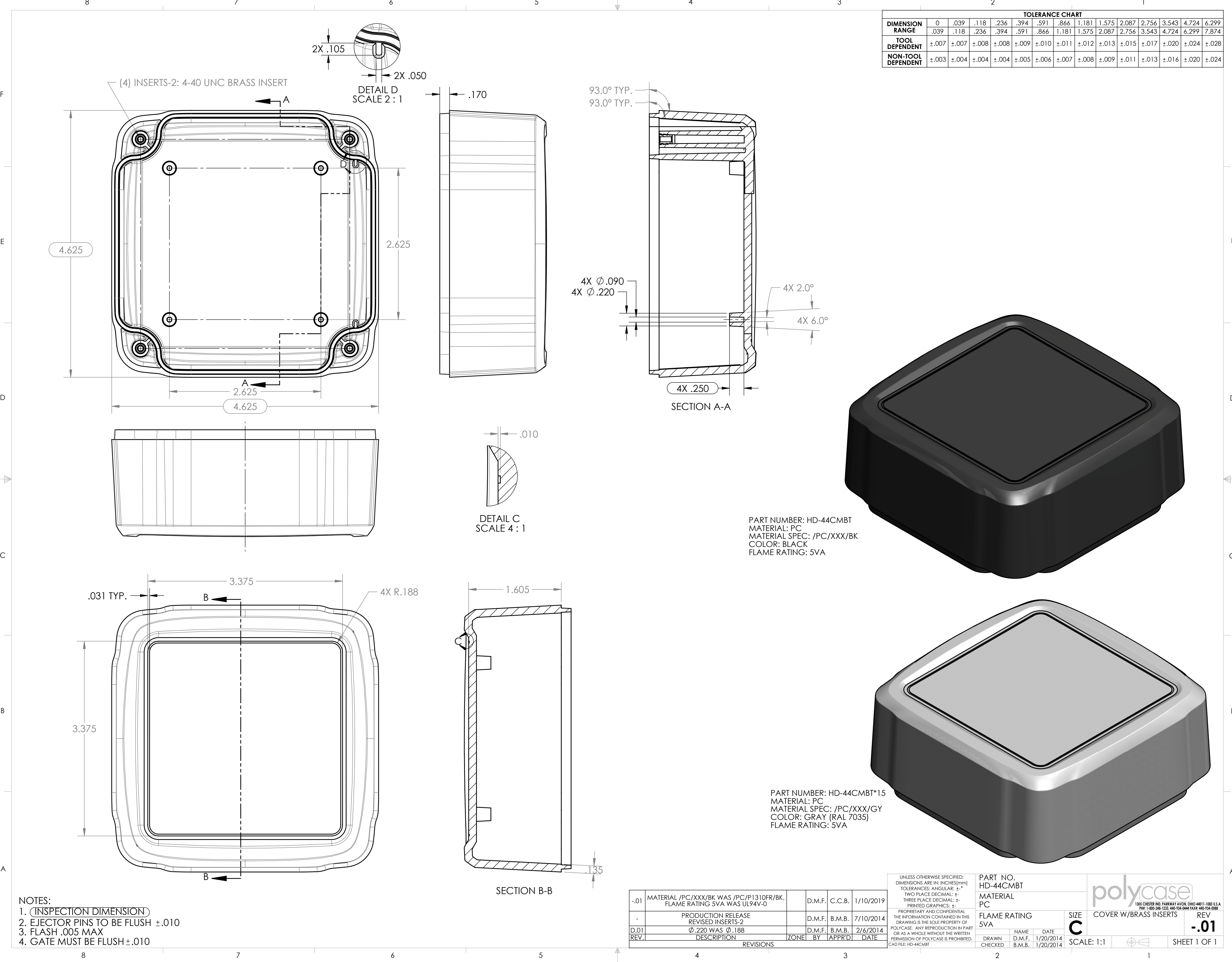
REV.	DESCRIPTION	ZONE	BY	APPRD	DATE
-01	MATERIAL /PC/XXX/BK WAS /PC/P1310FR/BK, FLAME RATING 5VA WAS UL94V-0		D.M.F.	C.C.B.	1/10/2019
-	PRODUCTION RELEASE 2X MIRROR RIB	F7	D.M.F.	B.M.B.	7/10/2014
D.01	MOVED RIBS FOR EJECTION	B6	D.M.F.	B.M.B.	2/6/2014

UNLESS OTHERWISE SPECIFIED:  
DIMENSIONS ARE IN: INCHES[mm]  
TOLERANCES: ANGULAR: ±2°  
TWO PLACE DECIMAL: ±.03  
THREE PLACE DECIMAL: ±.015  
PRINTED GRAPHICS: ±.010

PROPRIETARY AND CONFIDENTIAL  
THE INFORMATION CONTAINED IN THIS  
DRAWING IS THE SOLE PROPERTY OF  
POLYCASE. ANY REPRODUCTION IN PART  
OR AS A WHOLE WITHOUT THE WRITTEN  
PERMISSION OF POLYCASE IS PROHIBITED.  
CAD FILE: HD-44BFMB

PART NO. HD-44BFMB		
MATERIAL PC		
FLAME RATING 5VA		
	NAME	DATE
DRAWN	D.M.F.	1/20/2014
CHECKED	B.M.B.	1/20/2014

poly(case)	
1305 CHESTER IND. PARKWAY AVON, OHIO 44011-1083 U.S.A. PH: 1-800-248-1233, 440-934-0444 FAX: 440-934-0088	
BASE, W/FLANGES & PCB BOSSSES	REV -01
1	SHEET 1 OF 1

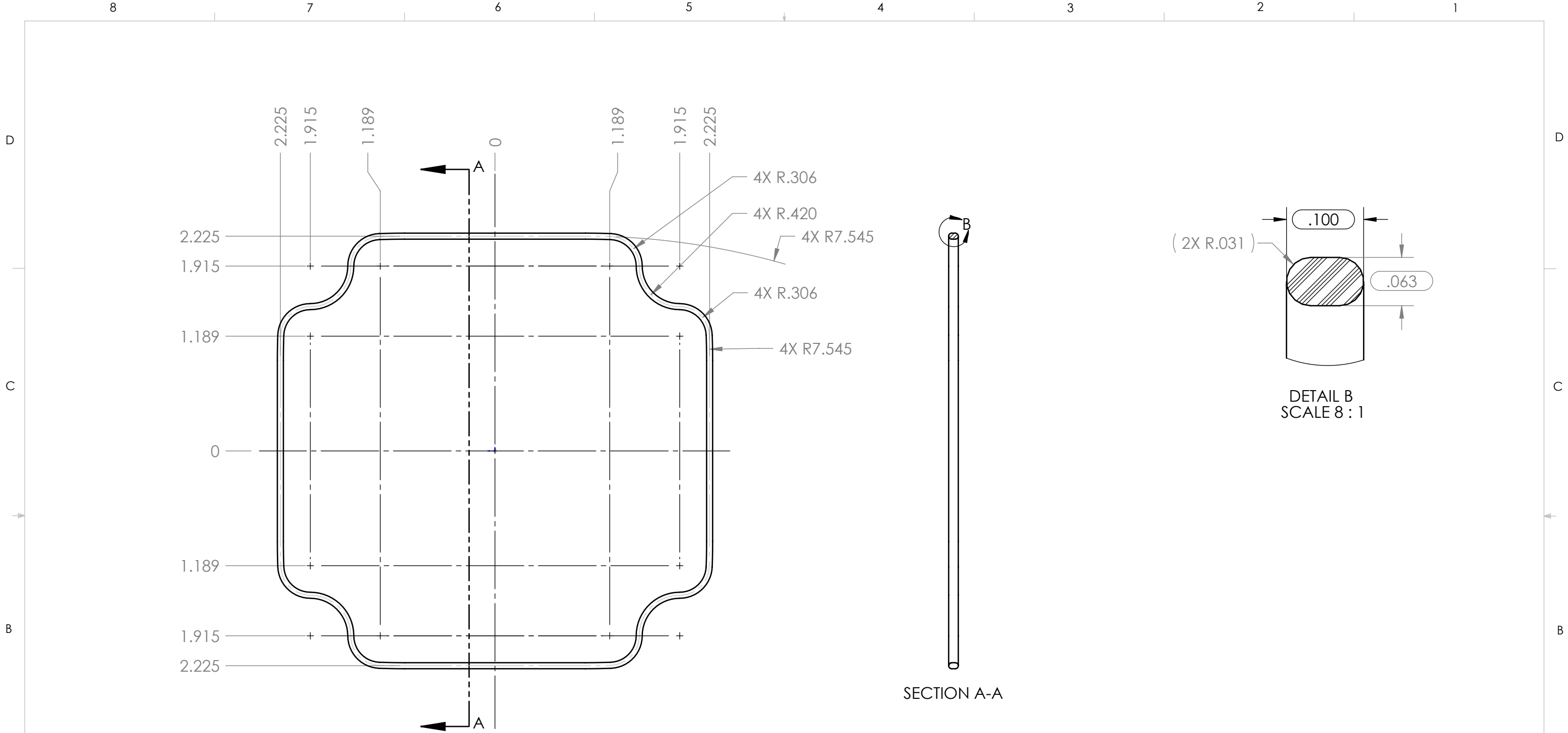


TOLERANCE CHART															
DIMENSION RANGE	0	.039	.118	.236	.394	.591	.866	1.181	1.575	2.087	2.756	3.543	4.724	6.299	
TOOL DEPENDENT	±.007	±.007	±.008	±.008	±.009	±.010	±.011	±.012	±.013	±.015	±.017	±.020	±.024	±.028	
NON-TOOL DEPENDENT	±.003	±.004	±.004	±.004	±.005	±.006	±.007	±.008	±.009	±.011	±.013	±.016	±.020	±.024	

- NOTES:
- (INSPECTION DIMENSION)
  - EJECTOR PINS TO BE FLUSH ±.010
  - FLASH .005 MAX
  - GATE MUST BE FLUSH ±.010

REV.	DESCRIPTION	ZONE	BY	APPR'D	DATE
-01	MATERIAL /PC/XXX/BK WAS /PC/P1310FR/BK, FLAME RATING 5VA WAS UL94V-0		D.M.F.	C.C.B.	1/10/2019
-	PRODUCTION RELEASE REVISED INSERTS-2		D.M.F.	B.M.B.	7/10/2014
D.01	Ø .220 WAS Ø .188		D.M.F.	B.M.B.	2/6/2014
REV.	DESCRIPTION	ZONE	BY	APPR'D	DATE

UNLESS OTHERWISE SPECIFIED: DIMENSIONS ARE IN: INCHES[mm] TOLERANCES: ANGULAR: ±° TWO PLACE DECIMAL: ±- THREE PLACE DECIMAL: ±- PRINTED GRAPHICS: ±-						PART NO. HD-44CMBT		polycase	
PROPRIETARY AND CONFIDENTIAL THE INFORMATION CONTAINED IN THIS DRAWING IS THE SOLE PROPERTY OF POLYCASE. ANY REPRODUCTION IN PART OR AS A WHOLE WITHOUT THE WRITTEN PERMISSION OF POLYCASE IS PROHIBITED. CAD FILE: HD-44CMBT						MATERIAL PC		1305 CHESTER RD. PARKWAY AVON, OHIO 44011-1083 U.S.A. PH: 1-800-248-1233, 440-934-0444 FAX: 440-934-0088	
						FLAME RATING 5VA		COVER W/BRASS INSERTS	
						SIZE C		REV -01	
						DRAWN CHECKED		SCALE: 1:1	
						NAME B.M.B.		SHEET 1 OF 1	
						DATE 1/20/2014			



- NOTES:
- COLOR: TRANSPARENT
  - MATERIAL SPEC:  
Momentive Performance Mat'ls TSE221-3U
  - (INSPECTION DIMENSION)
  - TOLERANCES UNLESS OTHERWISE SPECIFIED  $\pm .5\%$

REV.	DESCRIPTION	ZONE	BY	APPR'D	DATE
REVISIONS					

UNLESS OTHERWISE SPECIFIED:  
DIMENSIONS ARE IN: INCHES [mm]  
TOLERANCES: ANGULAR:  $\pm 2^\circ$   
TWO PLACE DECIMAL:  $\pm .030$   
THREE PLACE DECIMAL:  $\pm .015$   
PRINTED GRAPHICS:  $\pm .010$

PROPRIETARY AND CONFIDENTIAL  
THE INFORMATION CONTAINED IN THIS  
DRAWING IS THE SOLE PROPERTY OF  
POLYCASE. ANY REPRODUCTION IN PART  
OR AS A WHOLE WITHOUT THE WRITTEN  
PERMISSION OF POLYCASE IS PROHIBITED.  
CAD FILE: GASKET-44

PART NO. GASKET-44*08		
MATERIAL SILICONE		
FLAME RATING		SIZE <b>B</b>
DRAWN	NAME D.M.F.	DATE 1/23/2014
CHECKED	-	1/13/2010

**polycase**  
1305 CHESTER IND. PARKWAY AVON, OHIO 44011-1083 U.S.A.  
PH#: 1-800-248-1233, 440-934-0444 FAX#: 440-934-0088

Product Detail Drawing

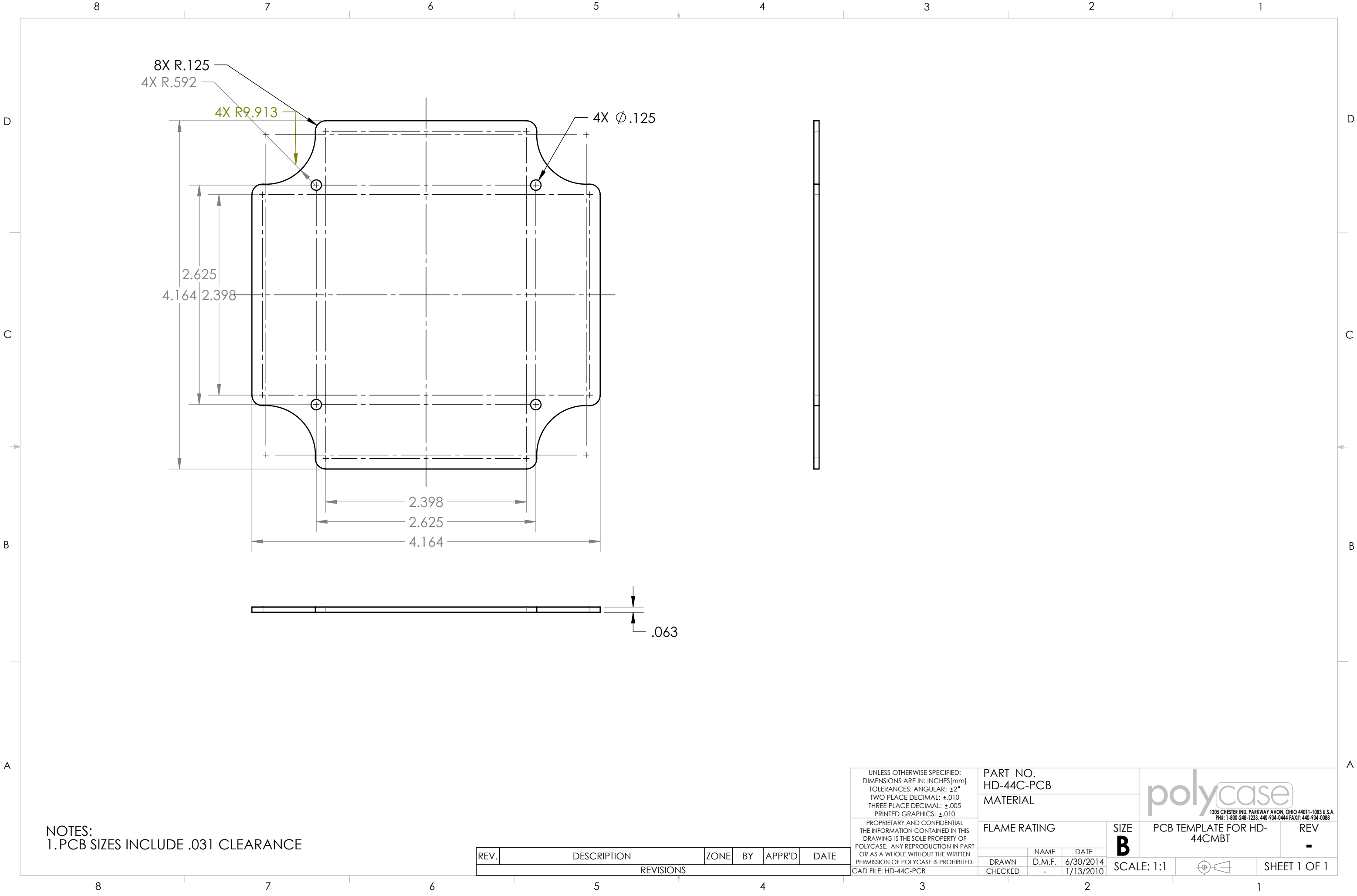
REV  
-

SCALE: 1:1

SHEET 1 OF 1







NOTES:  
1.PCB SIZES INCLUDE .031 CLEARANCE

REV.	DESCRIPTION	ZONE	BY	APPR'D	DATE
REVISIONS					

UNLESS OTHERWISE SPECIFIED:  
DIMENSIONS ARE IN: INCHES [mm]  
TOLERANCES: ANGULAR:  $\pm 2^{\circ}$   
TWO PLACE DECIMAL:  $\pm .010$   
THREE PLACE DECIMAL:  $\pm .005$   
PRINTED GRAPHICS:  $\pm .010$   
PROPRIETARY AND CONFIDENTIAL  
THE INFORMATION CONTAINED IN THIS  
DRAWING IS THE SOLE PROPERTY OF  
POLYCASE. ANY REPRODUCTION IN PART  
OR AS A WHOLE WITHOUT THE WRITTEN  
PERMISSION OF POLYCASE IS PROHIBITED.  
CAD FILE: HD-44C-PCB

PART NO. HD-44C-PCB		
MATERIAL		
FLAME RATING		
DRAWN	NAME	DATE
CHECKED	-	6/30/2014 1/13/2010

**polycase**  
1305 CHESTER IND. PARKWAY AVON, OHIO 44011-1083 U.S.A.  
PH#: 1-800-248-1233, 440-934-0444 FAX#: 440-934-0088

PCB TEMPLATE FOR HD-44CMBT

SIZE  
**B**

SCALE: 1:1

REV  
-

SHEET 1 OF 1